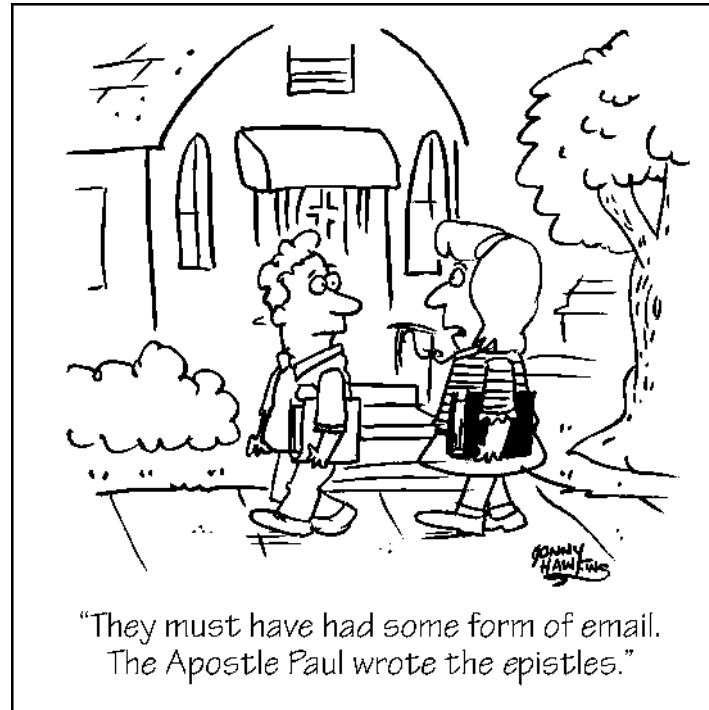


9:00AM Worship Service in the Sanctuary
with Holy Communion

Outdoor Worship 9:00am August 28
Guest Musicians: Testify

Holy Communion is celebrated each week

Church Website: www.sharingchristsllove.org



Volume 9, Issue 8

Monthly

August, 2011



SUNDAY, AUGUST 31 AT 9:00AM

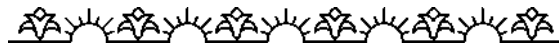
INSTALLATION OF

PASTOR RENEE PATTERSON

AS

NEW SENIOR PASTOR AT ST. PAUL LUTHERAN CHURCH

Everyone Invited to attend the installation, followed by a breakfast of bagels and fruit.



VACATION BIBLE SCHOOL
AUGUST 8-12
MONDAY THRU FRIDAY, 9AM-NOON

All Children Welcome
Volunteers also Welcome!!!



NEIGHBOR'S NIGHT OUT
COMMUNITY PICNIC!

Once again this year, on **Wednesday evening, August 10th**, during the week of Vacation Bible School, we will have a "Neighbor's Night Out" community picnic.

The event will begin at 5:30pm and will include music, games for children, and songs performed by the Vacation Bible School kids. Also, take time to admire the artwork done by the VBS kids, which will be on display!

A free meal is included! The church will provide hot dogs, chips and drinks. We're asking members to bring a salad or dessert to share.

Invite a friend to this fun annual event!!!

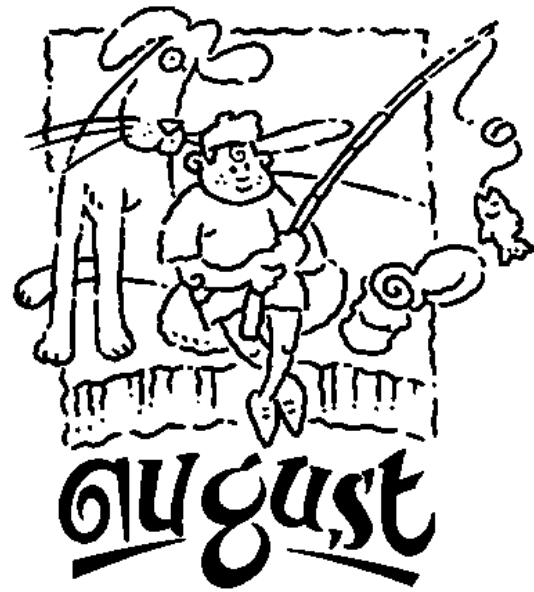
5879 Wyoming Trail,
PO Box 583
Wyoming, MN 55092
Phone - 651.462.5212
Fax - 651.462.8312
www.sharingchristsllove.org

Church Staff

Rev. Renee Patterson, Pastor
Janet Nutter, Children's Ministry
Patti Lichtscheidl, Preschool Director
Kim Olson, Office Administrator

Parish Nurse: Karen Carlson,
Custodians: Cindy Gruett,
Bill Oswald, Jerry Nelson
Music: Jeanne Richards,

Upcoming Worship



August 7 — Pentecost 8
9:00am ELW w/Communion

August 14 — Pentecost 9
9:00am Celebration Service w/Communion

August 21 — Pentecost 10
9:00am ELW w/Communion

August 28 — Pentecost 11
9:00am OUTDOOR Celebration Service
Guest Musicians: Testify

September 4 — Pentecost 12 (Labor Day Weekend)
9:00am ELW w/Communion

**RALLY DAY
SUNDAY, SEPTEMBER 11TH**



Please call Janelle Albee at 651.462.8084 or email her at njalbee@aol.com to place requests on the prayer chain. Requests are kept confidential unless otherwise stated by the person requesting the prayer. You may also call the church office, 651.462.5212.

PARTICIPANTS FOR JULY — 9:00AM SERVICES

Date	Assistants	Readers	Acolytes	Ushers	Greeters
August 7	Zella, Arlie, Jan T	Katie E	Michael J, Megan K, Sam L	Jon Quale Andy Norwig	John & Kari Unruh Dee Wilkinson
August 14	Shirley	Neil G	Ben M, Jerrod L, Shelby M	Dale Brainard Dave Haselbauer	Chris and Shirley Zierke
August 21	Jan B, Sheila, Neil	Dave H	Sierra N, Brandon R, Kaylee S	Edwards Family	Brian and Rita Young
August 28 OUTDOOR	Carissa	Karen Chapin	Lydia B, Katie B, Michael J	Johnson Family	None
Sept. 4 Labor Day	Rod, Kathie, Arlie	Cheryl G	Megan K, Sam L, Shelby M	Dave Schuder Chris Zierke	Deb Zaudtke, Laura Walesheck
Sept 11 RALLY DAY	Claudia	Jenny G	Kaylee D, Sierra N, Brandon R	Dale Brainard Dave Haselbauer	Shirley Anderson Jim & Karen C Mick & Sheila Byl

ALLUMINUM RECYCLE BIN

We now have a place for all your unwanted aluminum cans and misc. aluminum items. The "can cage" is down by the shed, at least for now. It will take time to fill it up...but let's start now. Thank you!

For Community Information
Please call the office, 651.462.5212
Or check the Kiosk for Information

- ◆ **Older Adults...Household Chores Overwhelming YOU?** ESR East Suburban Resources a non-profit agency can help. They employ adults with disabilities for housekeeping, light home maintenance, yard work, etc. Call ESR 651.351.0190. There are no fees,
- ◆ **Walk, Run, Talk, Fun! Walkers Welcome at Wyoming Elementary.** Walk in a safe environment. Register for a morning or evening session and you can walk throughout the school year. ID badges will be given and must be worn while walking. Cost is \$15 annually. See the flyer on the kiosk. Call 651.982.8110.
- ◆ **Haven Center in North Branch and Cambridge** offers counseling, therapy and coaching. For more information see the flyer on the Kiosk.

Need help with groceries?

The next "FARE FOR ALL"
food distribution is
WEDNESDAY, AUGUST 24, 4-6PM
At Forest Lake VFW (near Target)
www.fareforall.org
Or
RUBY'S PANTRY, Saturday, August 13
at Forest Hills UMC beginning at 8:15am
(A \$15 donation is suggested.)

- LOCAL FARMER'S MARKETS**
- ◆ Almelund Fridays 4-7pm
 - ◆ Forest lake, Lakeside Park, Tuesdays 5-8pm
 - ◆ Harris, Ralroad Park, Sundays 1-5pm
 - ◆ Lindstrom, St. Bridget's Catholic Church, Wednesdays, 3-6pm; Saturdays, 8am-Noon
 - ◆ North Branch, 8th & Main, Saturdays 8a-Noon (July-Oct.)
 - ◆ Wyoming, Hwy. 61 near Grace Church, Thursdays 4-8pm

- COMMUNITY SUPPORTED AGRICULTURE**
- ◆ Big River Farms, Marine on St. Croix 651.433.3676
 - ◆ Little Flower Farm, Marine on St. Croix 651.433.5241
 - ◆ Nitty Gritty Dirt Farm, Harris 651.226.1186
 - ◆ Treasured Haven Farm, Rush City 320.358.3581
 - ◆ Women's Environmental Institute 651.583.0705

- LOCAL PRODUCE FARMS**
- ◆ Blue Haven Berry Farm, Stacy 651.491.7733
 - ◆ Wisp-O-Willow, Stacy 651.462.5149
 - ◆ Chisago Lakes Berry Basket, Shafer 651.257.5577
 - ◆ Pleasant Valley Orchard, Taylors Falls 651.257.9159
 - ◆ Sunrise River Apple Farm, Wyoming 651.462.8220
 - ◆ Vue Family Farm, Center City 651.257.5439
 - ◆ Wild Fruits Farm LLC, Taylors Falls 612.715.0500
 - ◆ Zoua and Dang Farm, Taylors Falls 651.214.2998

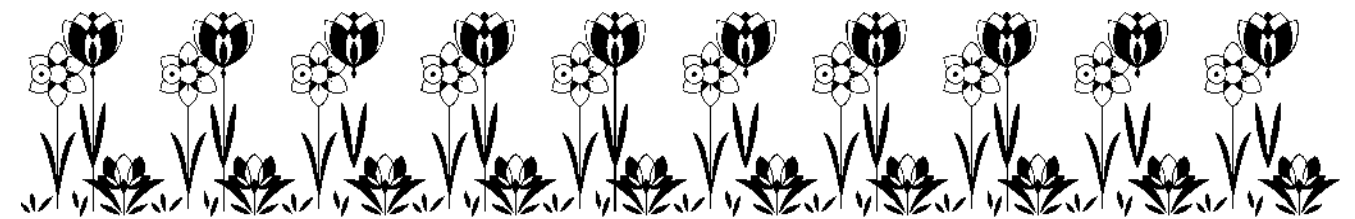
See the brochure on the kiosk!

**LET'S MAKE AUGUST A SPECTACULAR MONTH...
FAMILY PATHWAYS FOOD PANTRY NEEDS**

Soon hundreds of children will finish the school year and be home during the summer. Family Pathways Food Pantry offers a supplemental summer lunch program to help low income families. An example of a typical lunch bag for each child includes:

2 boxes of Mac and Cheese	3 cans of soup
2 cereal bowls	Peanut Butter
1-2 cans of applesauce	2 complete meals
1-2 juice boxes	Cereal
Fruit bars	Healthy snacks
Candy treat	

The grocery cart will again be in the narthex for your donations. Please be generous!!! Thank you!



We remember in our prayers.....



Pray for those recovering at home, **Bill Coppersmith, Arnie Rudenick, Marj Jaeb and Jim Fromm**; from surgery Ruth Koehly, knee replacement, Gordy Maier hip replacement

We keep in our prayers Julie Lundgren's dad, Paul who broke his leg while cutting up a fallen tree; **Katie Edward's** cousin Dean Turner, suffering with MS; **Kathie Marabella's** parents, Keith and Lucy Messer; **Donna Mayville's** parents, Gilbert and Marian; **Janelle Albee's** parents, Bill and Erlyne; **Darlene Petrey; Bill Oswald's** brother, Dick; **Debbie Zaudtke's** daughter, Dana. We continue prayers for **Tony Wicklander's** health issues related to Bechet's Disease.

We pray for those with cancer, **Steve and Julie Ohmann's** friends David Rehnke and his sister Brenda Rehnke; **Karen Chapin's** mother, Luella Johnson, suffering from acute leukemia and other medical issues; Heather Temte, daughter-in-law of **Mike and Sue Temte; Shirley Anderson and Maureen Sausen's** niece, Cindy Jerve, 59, who has ovarian cancer; **Eileen Ramse's** niece, Cheryl Bartz, breast cancer; **Rod Jasmer's** Goddaughter, Caroline, 7, brain cancer; **Lois Rustad's** niece, Sharon Klein, with cancer of the lung, brain and bone; **Karen Rozeske's** cousin, Laurel Shannon; **Jean Enrooth's** sister, Roxanne Ostendorf; **Leann McGowan's** sister, Karen Johnson; **Pat Miska's** cousin's wife, Joanne Brant; **Neal Albee's** cousin, Mike Albee.

We remember those in health care facilities, **Gene Thompson** a resident of Margaret's House Memory Care Facility in Chisago City.

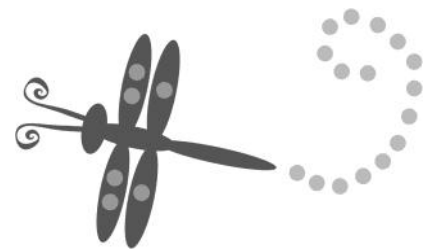
For the health and safety of all service men and women, especially **Andy Brant**, nephew of Jerry and Claudia Nelson, who is in Afghanistan. All others serving in war torn countries.

THANK YOU

I wish to thank you for your graciousness and support these past 6 months as your interim pastor. It truly has been a time of blessing and renewal for Sondra and I. We appreciated the tasty cake and gifts at our sendoff on July 10th.
In Christ's love, Pastor Jim

From **Family Pathways** following the delivery of 100 pounds of food:

"Thank you very much for your donation! We will put it to good use. Our clients, volunteers and staff appreciate your generosity and thoughtfulness."



In honor of Jerry, Dave and John
A gift to the Good Neighbor Fund
Given by Jim and Karen Carlson



To My New Family in Christ Jesus,

First off, I simply want you all to know that I am just so very grateful to be here. It is truly an answer to prayer. My first Sunday here at St. Paul Lutheran Church was nothing short of amazing! The sanctuary was full and the energy was palpable as we commissioned and sent off our Quad Cities Mission Team 2011. And as they began their journey we sent them with hopes that they would encounter God in their travels and their kingdom work. There is something about new beginnings that I just love! They are just so very fresh and brimming with hope. There is something magical about new beginnings. No matter what we have been through, new beginnings always bring with them the promise of opportunities and hope.

I think I like new beginnings because they create two specific opportunities for us. First, they enable us to take our focus off of yesterday's struggles, disappointments and frustrations. And they create the unique opportunity to take lessons from the past with us, but the past itself, stays where it is....in the past. Second they bring the hope of a better tomorrow. Hope brings courage, renewed energy and strength with it. It helps to create the positive momentum the past cannot. John Maxwell said *Where there is no hope in the future, there is no power in the present.* We need new beginnings to help create the much needed source of power and energy for our every day work of building God's kingdom here on earth.

The Gospel text for my second sermon has the parable of the hidden treasure in it. I love this parable because it always reminds me that God is up to something. He is always calling us to discover the treasure of the new beginnings He has in store. All these new beginnings remind me of one of my favorite quotes: ***Remember today, for it is the beginning of always. Today marks the start of a brave new future filled with all your dreams can hold. Think truly to the future and make those dreams come true. May today mark the beginning of many new joys and accomplishments... and a continuation of all of the good things that have already been achieved in you.*** **Author Unknown.** This quote speaks to all that has been accomplished and remains still to be accomplished at this amazing place called St. Paul Lutheran Church. God is good!

Peace in Christ,
Pastor Renee

PASTORAL CONCERNS: Since the inception of the Privacy Act, hospitals no longer call us to let us know when a member is admitted, so we are asking you to **CALL AND LET US KNOW!!!** Also, if you have concerns or wish to talk to Pastor Jim, please call the church office, 651.462.5212.

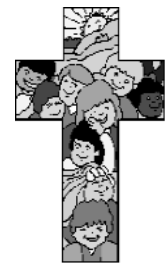
Youth & Children's News



Mission Trip

July 17th-22nd 13 students and 5 adults went to the Quad Cities of Illinois and Iowa. That includes the cities of Bettendorf, IA, Davenport, IA, Rock Island, IL, and Moline, IL. The weather was terribly hot but we were blessed with a woman who ran a daycare center who let us sleep in her building. We did a lot of work with disabled adults, elderly citizens, and children. All the participants from SPLC really grew in their faith this week and we watched each other change as the week went on. Despite the heat and some other struggles we had the week turn out to be a real blessing for all.

Carissa McGlade

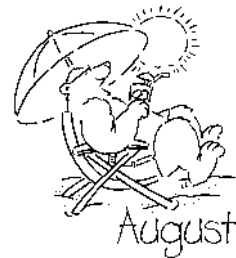


All God's Children Preschool Registration

All God's Children Preschool is accepting registrations for the 2011-2012 school year.

DID YOU NOTICE THE LAWN SIGNS?

In the narthex there are signs that we are asking members and non-members to take and put in their yards to advertise All God's Children Preschool. We are hoping to increase our enrollment for 2011-2012.



VBS Bible School: August 8-12, Monday thru Friday, 9am-Noon!

It's almost time for this year's Vacation Bible School....time for Pandamania!!

This year, kids of all ages will become close BFFs with Jesus through, games, songs, stories, and crafts. We will explore the stories of: Creation, Elijah, Jonah, Peter and Hannah.

Registrations are still being taken, even though it's too late for shirts! Speaking of...THE VBS SHIRTS ARE HERE! Come get your panda in Janet's office!!

We still have room for any and all VOLUNTEERS!! If you are available to love a child this week, let Janet know.

Decorating: Tuesday August 2nd and Wednesday August 3rd. Please let Janet know if you can put a few hours in one of those days to put our Bamboo World together!

If you are interested in helping, or want to ask questions, please contact Janet Nutter, Pandamania Director, at jnutter@sharingchristlove.org.—a big THANK YOU to YOU

PLEASE NOTE: We have many amazing Volunteers signed up to help at VBS. Please come to an orientation session to learn what you will be doing at your station, or in your group:

VBS Volunteer Sessions:
Wednesday August 3 10 AM
Wednesday August 3 7 PM
Sunday August 7 10 AM
Sunday August 7 2 PM

(and THANK YOU!!)



NOON,
Wednesday,
August 24

Newsletter Mailed Wednesday,
August 31st at 10am



Accompaniment in Practice

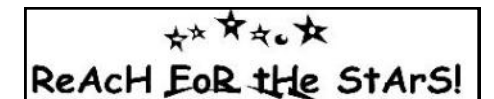
In the February and March Newsletters we printed articles titled “Changing Context of Global Mission” and “Accompaniment is Relationship”, using information adapted from the ELCA website. This month we continue this theme. In April I attended a three day seminar sponsored by St. Paul Partner's Water Development which used Bible study and participatory learning to teach the practice of accompaniment. The following are some accompaniment practices.

- ❖ **Respecting local autonomy**
Mission is the responsibility of the local church. Outside the U.S. the ELCA follows the lead of its companion churches as they determine how mission should be done in their context.
- ❖ **Investing in local priorities**
Accompaniment means listening carefully, understanding key local priorities, and channeling funds to support those priorities.
- ❖ **Moving from power over to power with**
Accompaniment calls us to share our resources and our decision making, and to make decisions mutually, as equals.
- ❖ **Acknowledging gifts and assets**
Accompaniment challenges us to see beyond needs and begin to recognize non-material gifts and talents like skills, credibility, integrity, and respect. **Money is not the only gift!**
- ❖ **Building Capacity**
Our generous tendency to want to “do for” can create dependency between companions. Dependency is avoided when we invest in building up one another's capacity to proclaim and serve by sharing knowledge, insights, personnel, resources, and experience.
- ❖ **Developing and encouraging local leadership**
Providing training and scholarships enables local leadership to move ahead on their own.
- ❖ **Supporting local evangelism**
Most new believers respond best to local evangelists and church leaders who speak their language and understand their culture.
- ❖ **Intentionally collaborating**
Collaboration among partners is critical in order to reduce duplication of effort, maximize resources, support local priorities, and strengthen effective local ministry
- ❖ **Seeking sustainability**
A sustainable ministry lasts a long time. It's something that the companion can fund, staff, and manage for years on its own. Sustainability takes lots of time. It means working together to understand the context, recognize local assets, utilize outside resources to fill gaps, and build capacity for the long term.
- ❖ **Participating globally for local engagement**
The global and the local are no longer segregated. Global warming, immigration, and food and gas prices all point out ways that we are interconnected. Through our global engagement, we learn skills that help us be better leaders and missionaries in our own context.

Fran Nordhausen



Have you been unable to make it to church and communion? Would you simply like a personal visit from someone in the St. Paul Lutheran family? A member of the SPL Visitation Team would be happy to visit you and give you communion, if you desire. We use elements that have been consecrated at the previous Sunday service and a short liturgy. We will also pray with you. Please call the church office, 651.462.5212, if you would like a visit.



Adults 55+

Classes are on
Mondays, Wednesdays, and Fridays
10:30-11:30am
Cost: \$1.00

Did you know.....

New beginnings.

They are hopeful and exciting. Like the start of a new year, they are often accompanied by resolutions to undertake some positive goals. All to make us better, healthier, stronger.

But the beginning of a new year means the loss of the old one. A new beginning for a widow means the loss of a spouse. A new beginning to a job might result in the loss of a former one. A new home means a move from the old.

A new pastor means the loss of a former one (*or more than one, in our case*). We very recently said goodbye to Pastor Mona Anderson and to Pastor Jim Mericle - with regret, but with thanksgiving for their unique gifts, and for their part in our growth. They have moved us along our path to the present day.

Now we celebrate a new beginning with Pastor Renee Patterson accepting God's call to minister to the people of St. Paul Lutheran Church.

And, like the start of a new year, resolutions are made by her and by us to make this relationship the best it can be. All need to do their part to weave this new beginning into a beautiful tapestry.

We're hopeful. We're excited to begin.

All to the glory of God.



Carol Bisek

**LUTHERAN WORLD RELIEF FAIR
TRADE PRODUCTS AVAILABLE**



Need Coffee? Need Chocolate?

Buy these products in the narthex each Sunday and know you'll be helping poor farmers around the world at the same time.

In addition, 5% of all sales goes back to Lutheran World Relief for their development products.

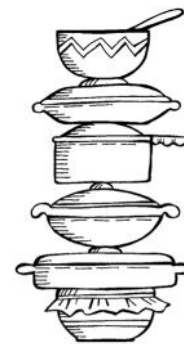
**Coffee is \$5.25/\$6
Chocolate bars \$1.75**

Hot Cocoa Mix and Baking Cocoa may be ordered, contact Mary Haselbauer, 433.3413.



**MISSION
ENDOWMENT FUND**

The St. Paul Lutheran Mission Endowment Fund is used to support ministries of all shapes, sizes and locations. Your support is appreciated and we encourage congregation members to remember the fund while writing their Last Will and Testaments. In addition, the fund does accept donations throughout the year from interested givers. If you have any questions, please ask Chris Kuehn or Jerry Nelson for more information.



"LET'S HOT-DISH"

We are trying a new idea by getting together at church to cook and freeze meals to have ready for anyone that is in need for whatever reason.

We are also looking for volunteers that are willing to deliver meals, help with yard work, driving or any other ways we can help. If you can help in any way please contact Zella Oswald 462-5065 or Jan Taylor 462-1587 from Congregational Life Team

**Hot
Dish
Dinners**

OFFICE HOURS

Pastor Renee Patterson:
Tuesday, Wednesday, Thursday

Kim:
Tuesday-Thursday 8am-4pm

In case of an emergency and you need to reach someone immediately, you may call Pastor Renee, cell, 651.271.6882. or Kim, 651.257.2049. You may also leave a message at the church, 462.5212 and someone will return your call as soon as possible.



Review of Reports:

Pastor's Report

Pr. Renee spoke of her first Sunday as presiding Pastor. A Blessing and Sending of the Youth Mission Team to the Quad Cities took place. Pastor has asked the Mission Team to speak at the July 24 service.

Finance Report

Judy Gatzow presented Statement of Financial Position and Profit & Loss Previous Year Comparison.

Motion was made, seconded and unanimously approved to accept the Treasurer's Report

Accounts balances as of June 30: \$8,738.41/checking and \$14,478.77/savings. Today's checking account balance: \$13,337.19.

Judy reported that no bills are being held; payments are being made on time.

No news on the IRS payment or the corrected W2s. We do not have to make the \$2k payment this month.

Jerry Nelson reported the Audit Team is reviewing the first half of 2011.

Children, Youth & Family Faith Development Ministry Team

Pre-School Report - Pr. Renee stated she met with Patti Lichtscheidl; Chapel will be held on Thursday this fall. They are hoping to gather the "pre-school board" for a meeting.

Youth Report - The Mission Trip to the Quad Cities was noted and discussed.

Children's Ministry - Janet Nutter reported that her focus is on preparation for VBS August 8-12.

Global Missions Report

The Council was informed that a decision was made to postpone the tentatively planned 2012 visit. The hope is that, at a later date, additional people (included Pastor Renee) could commit to traveling.

Submitted our newsletter report with pictures regarding Pr. Nielsen's sending service to the Bega Kwa Bega News to be included in their next issue.

There was a brief discussion regarding other potential areas of Global Mission.

Congregational Life/Missions

The team volunteered our services once again for Hope Lodge on August 23.

Neighbor's Night Out Community Picnic will be held at the church on August 10.

A date will be set in mid-September for preparing and freezing meals as part of the Care Package Ministry.

Property, Building and Grounds Report:

Jerry Nelson reported the focus has been on clean-up - especially in the kitchen.

SPRRT

Cheryl Glassel reported the team is starting work on performance evaluation documentation.

Old Business

Jerry Nelson reported that he and Dave Haselbauer will clear the brush and wood to resolve the "tree situation".

Shirley Zierke reported they now have a full team for the Stewardship Congregational Cohort (Macedonia Project): Shirley Zierke, Renee Patterson, Jan Brainard, Carole England, Julie Lundgren, and Arne Ranta.

As per last month's discussion regarding Good Neighbor Fund guidelines, follow-up is being done with The Refuge, County Child Protection Services and Family Pathways. Any information will be shared with UMW. Judy Gatzow reported that gas and grocery cards have been procured.

Jerry Nelson reported on Stagecoach Days (September 17). Janet Nutter has been in conversation with Ande Armstrong at UMW. Jim Carlson agreed to host a joint SPL/UMW "pie class" to bake pies (approximately 50 are needed). Water bottles will not be provided this year. A skate park (sponsored by Polaris) will be held in the church parking lot and also a drum group from WI. Our monetary assistance was requested for the drum group. They are also looking for the donation of a quilt that can be raffled as a fund raiser for current/future Stagecoach Day costs.

Motion was made, seconded and unanimously approved to have Outreach be the Mission of the Month for August.

New Business

Pr. Renee's installation will be July 31. A Bagel and fruit breakfast will follow the service. Shirley will prepare an invitation letter to be sent to community leaders and others as identified by Pr. Renee. A Press Release will go to local papers.

A Fall Worship Proposal that included the creation of a second service was presented to the Council. Ensuing discussion included cost, service times, music, required volunteers, and congregational commitment. Shirley and Pr. Renee will follow up with WAM at their next meeting.

Pr. Renee presented some tentative plans and ideas for the Youth Program. She informed the Council she plans to use the curriculum "Here We Stand" for the fall confirmation program.

Meeting was adjourned at 8:50 pm

Respectfully submitted by Kathie Marabella

Next regularly scheduled council meeting is on August 16, 2011.



MISSION OF THE MONTH: Community Outreach

St. Paul Lutheran Church has always supported outreach to others as an individual church as part of the whole. We plan to continue this program and if you would like to give an extra gift to help, please do so during the month of August.



Dates to Remember:

- September 7— 6:30pm Guide Orientation
- September 14— 6:30pm Student/Parent Orientation and Late Registration
- Sunday, September 18—10:30am Acolytes Training
- Wednesday evening Workshops and Small Group activities

Check the website www.sharingchristlove.org the middle of August for registration and more information!



St. Paul Lutheran to Prepare and Serve Food at Hope House

We will be providing meals to guests at the Hope Lodge in Minneapolis, MN. "What is the Hope Lodge?" you may ask. The Hope Lodge offers cancer patients and their caregivers a free, temporary place to stay when their best hope for effective treatment may be in another city. Not having to worry about where to stay or how to pay for lodging allows guests to focus on getting well. Hope Lodge provides a nurturing, home-like environment where guests can retreat to private rooms or connect with others. There are 31 Hope Lodges in the United States and they are run under the American Cancer Society.

Bill and I were offered housing and stayed at the Hope Lodge when he was going through his cancer treatment. We were so impressed with how we were welcomed by the staff, volunteers and the guests. It made an extremely difficult time in our lives more manageable. The guests really enjoy having meals brought in as this also helps at a time when they aren't feeling well enough to cook or for that matter to eat. (No worries; the caregivers are always hungry.) It is always better when someone else does the cooking. Bill and I know personally how much these free meals were anticipated.

We, on the Outreach Team, decided that this would be a good ministry for St. Paul Lutheran. We are scheduled to provide a meal on August 23rd. We will have detailed information and sign ups for volunteer opportunities available on July 31. Please consider this outreach ministry by either providing food or helping serve or both.

Thank you,
Elly Coppersmith, on behalf of the Outreach Team



Enjoying the convenience of electronic giving!

St. Paul Lutheran Church wants to remind you that we offer electronic giving as a way to automate your regular weekly offering. Electronic giving offers convenience for our members and much needed donation consistency for our congregation.

There are two ways to set up electric donations. You can visit the church website at www.sharingchristlove.org, or if you wish, you can simply complete a paper authorization form and return it to the church office.

As you think about future contributions, please consider electronic giving. Authorization forms and additional information are available from the church office. Thank you!

CRISIS - HELP! HELP!

The worst drought in 60 years has reached crisis level in East Africa. Thousands and thousands of people in Ethiopia, central and northern Kenya, Djibouti and Somalia are leaving their homes in search of food, water and shelter.

ELCA Disaster Response is now providing water and enriched porridge to children and older adults who are too weak to eat dry food. Learn more about the disaster and how you can help at www.elca.org/disaster

Fran Nordhausen

Stagecoach Days Pie Extravaganza

STAGECOACH DAYS

Saturday, September 17

At Wyoming United Methodist Church
Hosted by: St. Paul Lutheran & Wyoming Methodist



Pumpkin Pie Baking Contest - 11am

Registration forms for the Pie Baking contest will be available at: www.wyomingumc.org, (insert St. Paul's website)
Or you can pick them up at either church office.

Pie Eating Contest - 12 noon

Registration forms for the Pie eating contest will be available the day of the contest at Wyoming UMC.

Pie & Coffee Social – 11am to 2pm

Open Talent Show – 1pm to 2pm (?)

Registrations forms for the open Talent Show will be available at: www.wyomingumc.org, (inserts St. Paul's website)
Or you can pick them up at either church office.

Volunteers are needed that day to:

- Slice and serve pie in the fellowship hall and in town!
- Clean up – (one of those necessary evils)

To get involved contact: Jerry Nelson at nelsononsioux@msn.com
Jan Taylor at taylor54558991@frontiernet.net
Ande Armstrong at ande@wyomingunitedmethodist.org

Looking forward to fall (hard to think of right now!):
Sign Up sheets for Sunday School will be available mid August and registration will continue through Rally Day, Sunday September 11th. The first Day of Sunday School and Club 5/6 will be Sunday September 18th. All kinds of fun, craziness, learning, enrichment and fellowship are being planned. You don't want to miss it!

Don't forget Operation Christmas Child later in the Fall. Stock up on school supplies, crayons, markers, pencils, sharpeners, toothbrushes, toothpaste, wash cloths, bars of soap, small toys, small notebooks, (to fit in a shoebox. Last year we had great success and sent about 100 boxes overseas.